

— THE —
RESIDENCES

AT REDGATE

LANDSCAPING
LAYOUT



P1_Butterfly Weed



P2_Moonbeam Coreopsis



P3_Happy Returns Daylily



P4_Southern Blue Flag Iris



P5_Pink Muhly Grass



P6_Blue Switch Grass



P7_Little Goldstar Black Eyed

PLANTS





S1_Shamrock Holly



S2_Winter Red Holly



S3_Dwarf Yaupon Holly



S4_Little Henry Virginia SweetSpire



S5_HighBush Blueberry

SHRUBS





T1_Foster's Holly



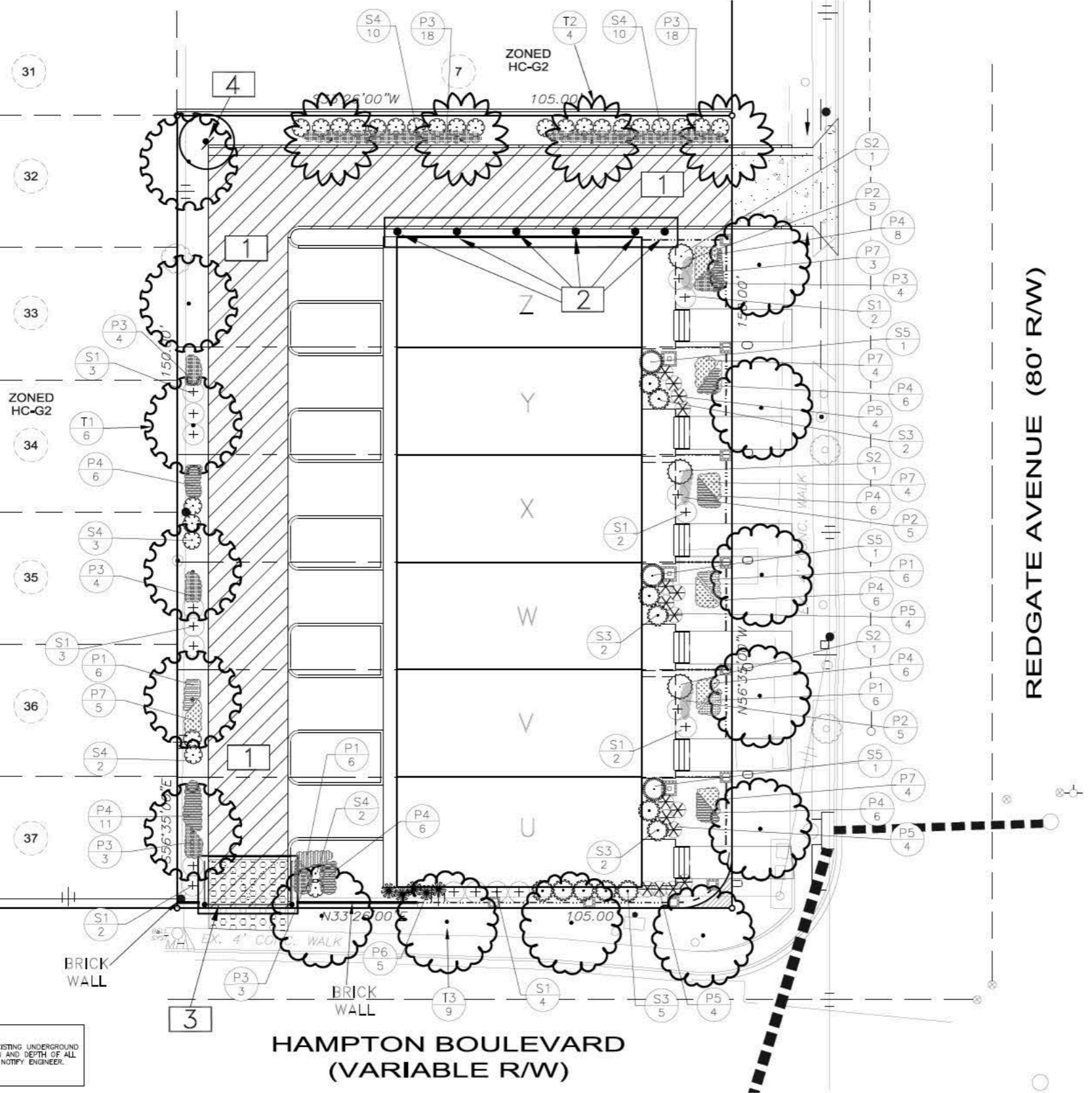
T2_Evergreen Sweet Bay Magnolia



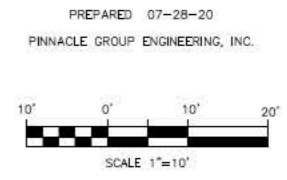
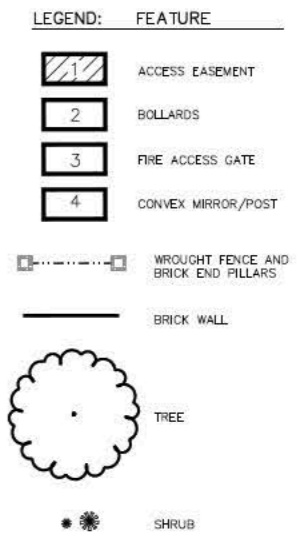
T3_Black Haw Viburnum Tree Form

TREES





PLANT KEY		
KEY	QTY.	BOTANICAL NAME COMMON NAME
T1	6	<i>Ilex x attenuata</i> 'Fosteri' FOSTER'S HOLLY
T2	4	<i>Magnolia virginiana</i> var. <i>australis</i> EVERGREEN SWEET BAY MAGNOLIA
T3	9	<i>Viburnum prunifolium</i> BLACK HAW VIBURNUM
S1	18	<i>Ilex glabra</i> 'Shamrock' SHAMROCK HOLLY
S2	3	<i>Ilex verticillata</i> 'Winter Red' WINTER RED HOLLY (& MALE)
S3	11	<i>Ilex vomitoria</i> 'Nana' DWARF YAUPON HOLLY
S4	27	<i>Itea virginica</i> 'Little Henry' LITTLE HENRY VIRGINIA SWEETSPIRE
S5	3	<i>Vaccinium corymbosum</i> HIGHBUSH BLUEBERRY
		ALL SHRUBS MINIMUM 3 GALLON
P1	24	<i>Asclepias tuberosa</i> BUTTERFLY WEED
P2	15	<i>Coreopsis verticillata</i> 'Moonbeam' MOONBEAM COREOPSIS
P3	54	<i>Hemerocallis</i> 'Happy Returns' HAPPY RETURNS DAYLILY
P4	61	<i>Iris virginica</i> SOUTHERN BLUE FLAG IRIS
P5	16	<i>Muhlenbergia capillaris</i> PINK MUHLY GRASS
P6	5	<i>Panicum virgatum</i> 'Heavy Metal' BLUE SWITCH GRASS
P7	20	<i>Rudbeckia</i> 'Little Goldstar' LITTLE GOLDSTAR BLACK-EYED.



NOTES:
THIS PLAN DOES NOT GUARANTEE THE LOCATION OF EXISTING UNDERGROUND UTILITIES. CONTRACTOR TO DETERMINE ACTUAL LOCATION AND DEPTH OF ALL UTILITIES PRIOR TO MOBILIZATION. IF CONFLICTS EXIST, NOTIFY ENGINEER.
BEFORE DIGGING CONTACT "MISS UTILITY" AT 811.